

Are You a Groundwater User?

Learn more about the

Sustainable Groundwater Management Act

California is celebrated for its beautiful waterways, productive agriculture, and diverse communities and landscapes. Groundwater, one of California's rich resources, is at risk. **Over the last century, California has experienced groundwater overdraft.** Overdraft occurs when more water is pumped out of the ground than is replaced - due to longer droughts and increased agricultural, residential, and industrial development.

The recent drought was one of the worst in the state's history, and periods of dry conditions are expected to be more common in the future. It will take sustainable water management to bring our underground subbasins back into balance for current and future generations. **For this reason, the California Legislature adopted the Sustainable Groundwater Management Act of 2014 (SGMA).**

The **Sustainable Groundwater Management Act** corrects our current course to ensure the long-term reliability of our connected surface water and groundwater resources.

What is a Groundwater Basin?

Groundwater is stored beneath the surface in layers of rocks and sands, called aquifers. Aquifers that interact with one another in a system form a groundwater basin.

The California Department of Water Resources (DWR) divides groundwater basins into subbasins to help characterize and address local groundwater conditions.

Who manages groundwater?

Recognizing that groundwater management is best accomplished at the local level, the law empowered existing local agencies to form **Groundwater Sustainability Agencies (GSA)**.

With stakeholder input, the local agencies will create a **Groundwater Sustainability Plan (GSP)** for their subbasin and the communities which they serve.

This plan will set goals and strategies to achieve sustainability in a groundwater basin. GSAs are then responsible for the development, implementation, and monitoring progress of the GSP for the next 20 years.

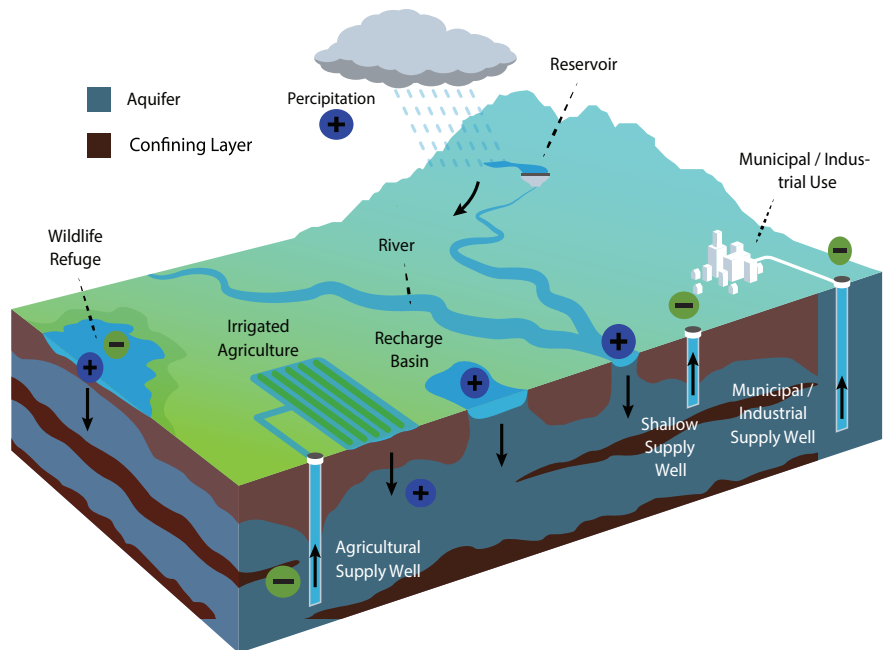
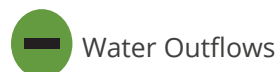


Image adapted from Department of Water Resources

What does Sustainable Management look like?



Water Outflows



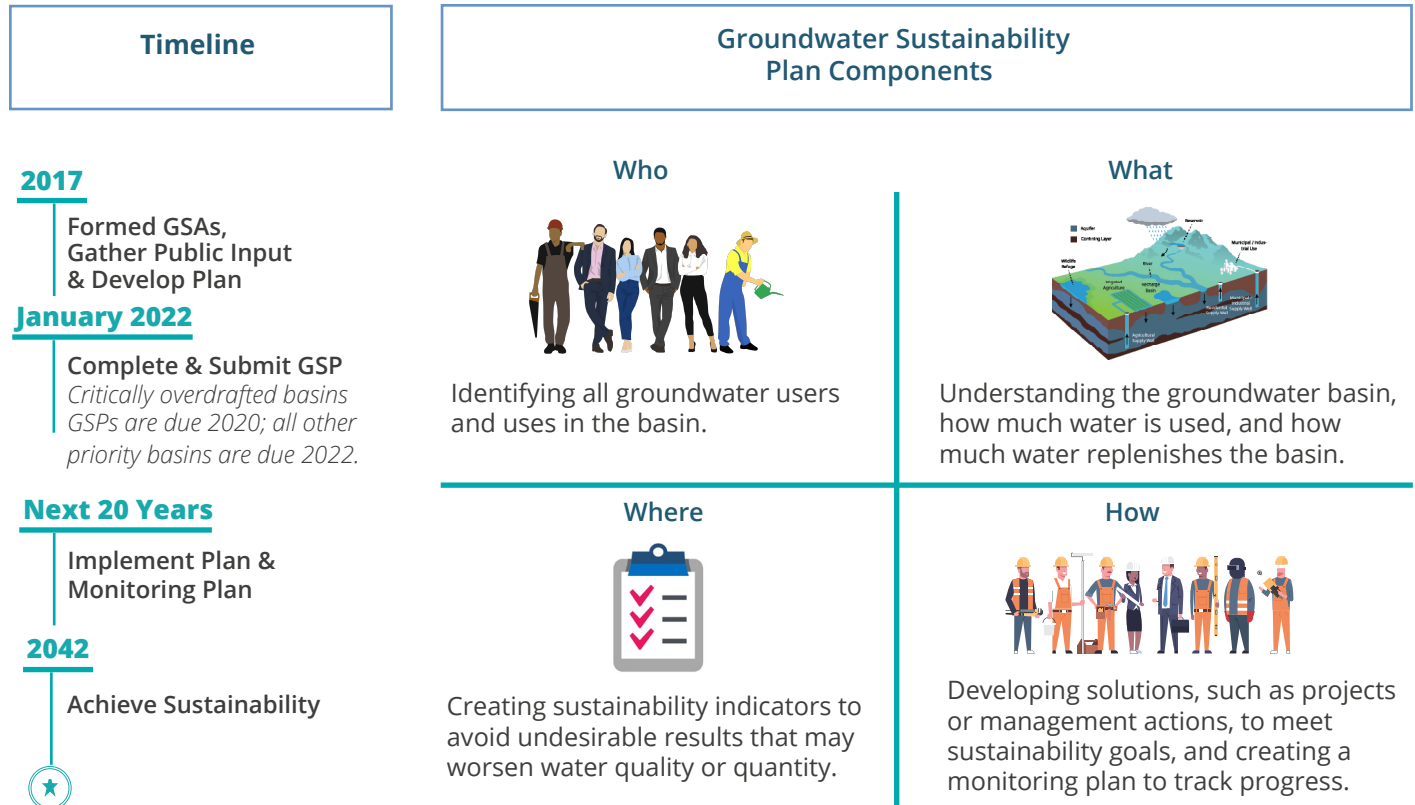
Water Inflows

A **Water Budget**, like a household budget, accounts for all the water that enters and leaves the groundwater subbasin. A water budget informs GSAs of the amount of water that can be withdrawn from the subbasin without harming groundwater users or groundwater-dependent habitats.

Sustainable Groundwater Management Act

Who is involved in developing Groundwater Sustainability Plans?

GSAs must identify and engage all beneficial uses and users of groundwater, including private well owners and users, public water systems, agricultural pumpers, and environmental interests among others to avoid the degradation of both water quality and quantity.



Learn More:

- ▶ About your local Groundwater Sustainability Agency here: bit.ly/id-gsa
- ▶ About your local water supply here: bit.ly/30ILVUh
- ▶ About groundwater and SGMA in the Solano Subbasin here: groundwaterguide.com

Support your GSA by providing input:

- ▶ Share how groundwater challenges affect you or your communities
- ▶ Support the development of sustainability indicators in the Groundwater Sustainability Plan
- ▶ Identifying projects that may improve groundwater conditions in your community

Here's how:

- ▶ Sign up for email updates: solanogsp.com
- ▶ Complete a survey about your groundwater uses and interests: surveymonkey.com/r/solanogsp
- ▶ Attend public meetings: solanogsp.com/outreach/
- ▶ Comment on Groundwater Sustainability Plan Section Drafts: solanogsp.com/gsp-draft-sections/

